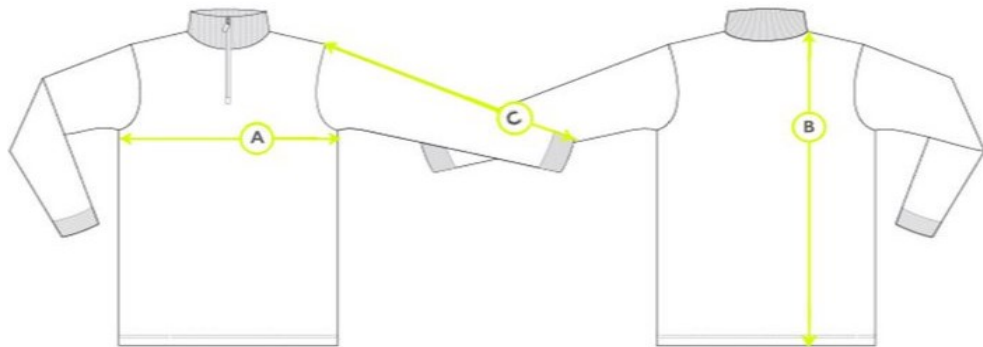


B250 Spirit 1/4 Zip Top

Product Measurements (cm)							
Chest Size	26/28"	30/32"	32/34"	34/36"	38/40"	42/44"	46/48"
A - Chest circumference	82cm	92cm	97cm	102cm	117cm	127cm	138cm
B - Body length	53cm	60cm	63cm	67cm	74cm	78cm	82cm
C - Sleeve length	44cm	50cm	53cm	56cm	61cm	66cm	69cm

*These figures are indicative only, and some variation should be expected, due to fabric stretch and production tolerances.

Measuring Guide



A. Chest circumference: Measured 2.5cm below the armhole and then doubled

B. Body length: Measured from high shoulder point

C. Sleeve length: Measured from the shoulder seam to the end of sleeve

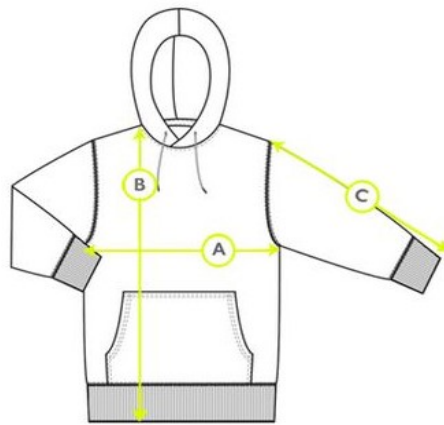
Notes:

B550 Spirit Panelled Hoodie

Product Measurements (cm)							
Chest Size	26/28"	30/32"	32/34"	34/36"	38/40"	42/44"	46/48"
A - Chest circumference	82cm	92cm	97cm	102cm	117cm	127cm	138cm
B - Body length	53cm	60cm	64cm	67cm	74cm	78cm	82cm
C - Sleeve length	44cm	50cm	53cm	56cm	61cm	66cm	69cm

***These figures are indicative only, and some variation should be expected, due to fabric stretch and production tolerances.**

Measuring Guide



A. Chest circumference: Measured 2.5cm below the armhole and then doubled

B. Body length: Measured from high shoulder point

C. Sleeve length: Measured from the shoulder seam to the end of sleeve

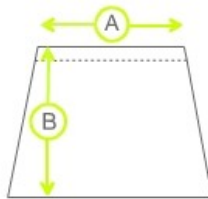
Notes:

G203 Spirit Skort

Product Measurements (cm)									
Waist Size	22"	24"	26"	28"	30"	32"	34"	36"	38"
A - Waist in cm's	56cm	61cm	66cm	71cm	76cm	81cm	86cm	91cm	96cm
B - Length	35.5cm	36.5cm	37.5cm	38.5cm	39.5cm	39.5cm	40.5cm	40.5cm	41.5cm

*These figures are indicative only, and some variation should be expected, due to fabric stretch and production tolerances.

Measuring Guide



A. Waist circumference: Measured on the waistband and then doubled

B. Length: Measured flat, from the top of the waistband to the hem

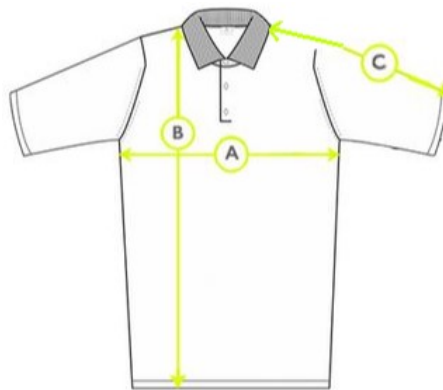
Notes:

G920 Spirit Sports Polo

Product Measurements (cm)							
Chest Size	26/28"	30/32"	32/34"	34/36"	38/40"	42/44"	46/48"
A - Chest circumference	74cm	87cm	92cm	97cm	110cm	117cm	127cm
B - Body length	54cm	59cm	63cm	67cm	74cm	77cm	77cm
C - Sleeve length	28cm	31cm	34cm	36cm	39cm	42cm	42cm

***These figures are indicative only, and some variation should be expected, due to fabric stretch and production tolerances.**

Measuring Guide



- A. Chest circumference: Measured 1cm below the armhole and then doubled
- B. Body length: Measured from high shoulder point
- C. Sleeve length: Measured from the shoulder seam to the end of sleeve

Notes:

G925 Spirit Sports Polo

Product Measurements (cm)							
Chest Size	26/28"	30/32"	32/34"	34/36"	38/40"	42/44"	46/48"
A - Chest circumference	74cm	84cm	90cm	94cm	105cm	115cm	125cm
B - Body length	54cm	56cm	58cm	59cm	61cm	64cm	67cm
C - Sleeve length	17cm	17cm	18cm	20cm	21cm	22cm	23cm

***These figures are indicative only, and some variation should be expected, due to fabric stretch and production tolerances.**

Measuring Guide



A. Chest circumference: Measured 1cm below the armhole and then doubled

B. Body length: Measured from high shoulder point

C. Sleeve length: Measured from the shoulder seam to the end of sleeve

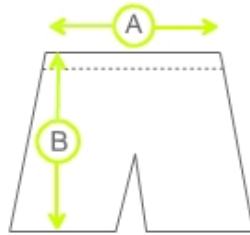
Notes:

P230/P231/P233 Spirit Short

Product Measurements (cm)							
Waist Size	24/26"	28/30"	32"	34"	36"	38"	40"
A - Waist Size	51cm	56cm	59cm	61cm	64cm	67cm	69cm
B- Leg length	36cm	39cm	41cm	42cm	44cm	45cm	46cm

*These figures are indicative only, and some variation should be expected, due to fabric stretch and production tolerances.

Measuring Guide



- A. Waist circumference: Measured unstretched on the waistband and then doubled
- B. Leg: Measured flat, from the top of the seam to the hem

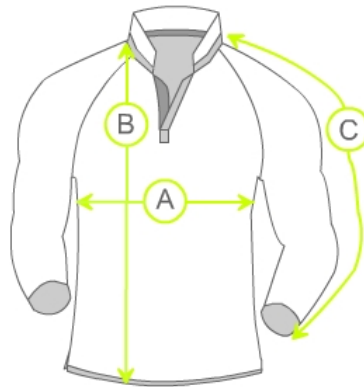
Notes:

R150 Reversible Sports Top

Product Measurements (cm)							
Chest Size	26/28"	30/32"	32/34"	34/36"	38/40"	42/44"	46/48"
A - Chest circumference	77cm	87cm	89cm	97cm	107cm	117cm	127cm
B - Body length	56cm	61cm	64cm	69cm	74cm	77cm	79cm
C - Sleeve length	55cm	63cm	65cm	68cm	74cm	81cm	84cm

***These figures are indicative only, and some variation should be expected, due to fabric stretch and production tolerances.**

Measuring Guide



A. Chest circumference: Measured 1cm below the armhole and then doubled

B. Body length: Measured from high shoulder point

C. Sleeve length: Measured from the shoulder seam to the end of sleeve

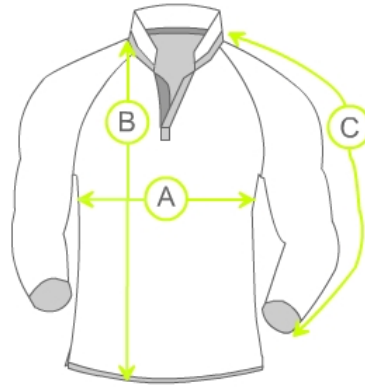
Notes:

R200 Reversible Sports Top

Product Measurements (cm)							
Chest Size	26/28"	30/32"	32/34"	34/36"	38/40"	42/44"	46/48"
A - Chest circumference	77cm	87cm	89cm	97cm	107cm	117cm	127cm
B - Body length	56cm	61cm	64cm	69cm	74cm	77cm	79cm
C - Sleeve length	55cm	63cm	65cm	68cm	74cm	81cm	84cm

***These figures are indicative only, and some variation should be expected, due to fabric stretch and production tolerances.**

Measuring Guide



- A. Chest circumference: Measured 1cm below the armhole and then doubled
- B. Body length: Measured from high shoulder point
- C. Sleeve length: Measured from the shoulder seam to the end of sleeve

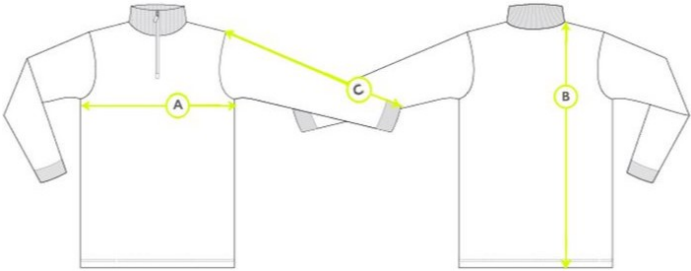
Notes:

T008 Panelled Rain Jacket

Product Measurements (cm)							
Chest Size	22/24"	26/28"	30/32"	34/36	38/40	42/44	46/48
A - Chest circumference	85cm	95cm	105cm	115cm	125cm	133cm	141cm
B - Body length	48cm	56cm	65cm	70cm	75cm	79cm	82cm
C - Sleeve length	58.5cm	67.5cm	76.5cm	83.5cm	88.5cm	92.5cm	96.5cm

*These figures are indicative only, and some variation should be expected, due to fabric stretch and production tolerances.

Measuring Guide



- A. Chest circumference: Measured 2.5cm below the armhole and then doubled
- B. Body length: Measured from high shoulder point
- C. Sleeve length: Measured from the shoulder seam to the end of sleeve

Notes:
