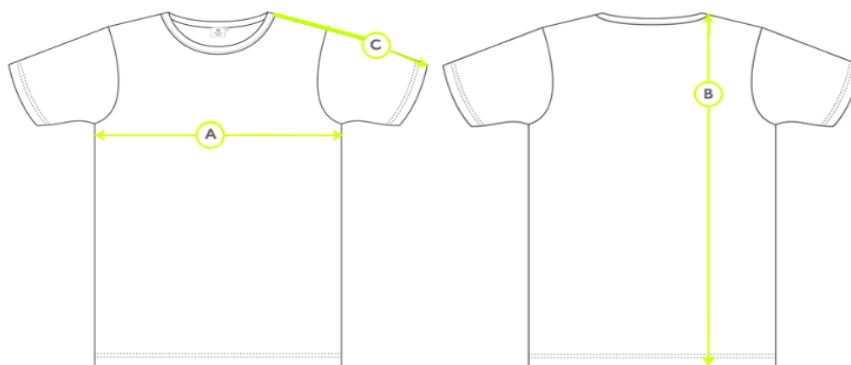


## G915 Active+ T-shirt

Product Measurements (cm)									
Chest Size	18/20"	22/24"	26/28"	30/32"	32/34"	34/36"	38/40"	42/44"	46/48"
A - Chest circumference	64cm	69cm	74cm	87cm	92cm	97cm	110cm	117cm	127cm
B - Body length	46cm	51cm	54cm	59cm	64cm	69cm	74cm	77cm	77cm
C - Sleeve length	23cm	27cm	28cm	31cm	34cm	36cm	39cm	42cm	42cm

\*These figures are indicative only, and some variation should be expected, due to fabric stretch and production tolerances.

### Measuring Guide



A. Chest circumference: Measured 2.5cm below the armhole and then doubled

B. Body length: Measured on the reverse, from high shoulder point

C. Sleeve length: Measured from the shoulder seam to the end of sleeve

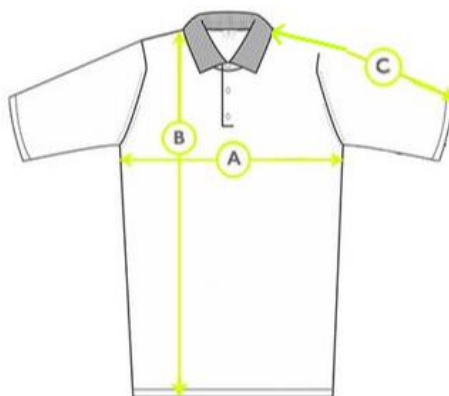
### Notes:

G916 Active+ Polo Shirt

Product Measurements (cm)									
Chest Size	18/20"	22/24"	26/28"	30/32"	32/34"	34/36"	38/40"	42/44"	46/48"
A - Chest circumference	64cm	69cm	74cm	87cm	92cm	97cm	110cm	117cm	127cm
B - Body length	46cm	51cm	54cm	59cm	64cm	69cm	74cm	77cm	77cm
C - Sleeve length	23cm	27cm	28cm	31cm	34cm	36cm	39cm	42cm	42cm

\*These figures are indicative only, and some variation should be expected, due to fabric stretch and production tolerances.

Measuring Guide



A. Chest circumference: Measured 2.5cm below the armhole and then doubled

B. Body length: Measured on the reverse, from high shoulder point

C. Sleeve length: Measured from the shoulder seam to the end of sleeve

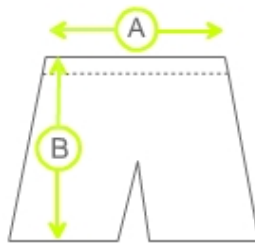
Notes:

P237 Activ+ Short

Product Measurements (cm)										
Waist Size	18/20"	20/22"	22/24"	24/26"	28/30"	32"	34"	36"	38"	40"
A - Waist Size	44cm	46cm	49cm	51cm	56cm	59cm	61cm	64cm	67cm	69cm
B - Leg length	27cm	30cm	34cm	36cm	39cm	41cm	42cm	44cm	45cm	46cm

**\*These figures are indicative only, and some variation should be expected, due to fabric stretch and production tolerances.**

Measuring Guide



- A. Waist circumference: Measured unstretched on the waistband and then doubled
- B. Leg: Measured flat, from the top of the seam to the hem

Notes: